



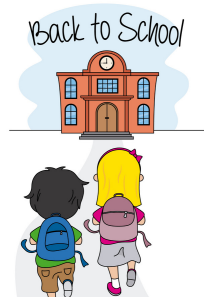
Aina Haina Elementary School

♥ We can't wait to see you!

Welcome Grade 2 Families!

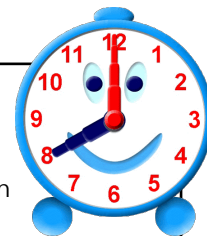
Drop Off & Pick Up

- Masks are required on campus when you are dropping off or picking up.
- Please check with your child's teacher for specific practices regarding your class.
- We have two parking lots that parents and guests may use: Makai (lower level at the front of the school) & Mauka (lower level near the intersection of Nenu St. & W. Hind Dr.).
- Please drive carefully entering and exiting campus; pedestrians are asked to use the crosswalk.
- For your convenience, we have two autolines in the morning for student drop-offs. 7:45 - 8:00 a.m. Makai (driveway at the front of the school) & Mauka (driveway near the Cafeteria).
- If you choose to walk your child to and from class, we appreciate you following social distancing guidelines. Please have your child make their way to class from the furthest point from classroom entrance, where comfortable and able, i.e. auto drop off, Admin Building walkway or grassy area fronting classroom entrance.



Schedule

- Our morning begins at 8:00 a.m. and ends at 2:15 p.m. (we end at 1:30 p.m. on Wednesdays).
- For wellness and security reasons, please drop off your child no earlier than a few minutes before 8:00 a.m. and please be present a few minutes before the end of the school day.
- If you are running late in the morning, please have your child go straight to class. Tardies are now recorded by their teacher.
- Updated Group 1 & Group 2 Schedule: <http://www.ainahaina.k12.hi.us/resources/AHS-Documents/Rotating-Group-Calendar-2021-Sem.-2-Revised-1.4.2021.pdf>

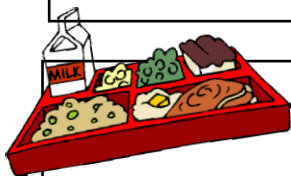


Keeping Our Keiki Safe



- Please wear a mask on campus. If your child does not have a mask, please check with your teacher for a disposable mask for the day.
- Please perform twice daily, well-checks with your child; once before bed and again after waking up. If any symptoms are present, please keep your child home.
- At this time, our library will remain closed in the mornings to students and families.
- School office hours are 7:30a-4:00p. Please call to make an appointment for all non-urgent matters.
- Use of our playground is limited to students during school hours with school staff supervision only.
- Communicate with your child's teacher regarding specific practices regarding your class.
- We believe that birthdays and holiday occasions are meant to be celebrated. However, we want to maintain precautions and mindfulness during our transition back to campus amid COVID. Please refrain from bringing in any goody bags or treats for sharing amongst the students.

Meals



- Breakfast = \$1.10 (7:30 - 7:55 a.m.)
- Lunch = \$2.50 (12:20 - 12:50 p.m.)
- Our monthly menu is posted on our website and eNotes: <http://www.ainahaina.k12.hi.us/resources/Home/January-2021.pdf>
- For your convenience, EZSchoolPay will allow you to make online deposits and to view your account <https://www.ezschoollpay.com/Login.aspx> or call us and we will be happy to assist you.

Questions? Please contact Renee Ako, PCNC:
Renee.Ako@notes.k12.hi.us or
(808) 377-2419

Aina Haina Elementary
IB WORLD SCHOOL



Aina Haina Elementary School
801 W. Hind Drive
Honolulu, HI 96821
<http://www.ainahaina.k12.hi.us/>
(808) 377-2419